






# Editorial

## A Public Health, Whole-of-Government Approach to National Suicide Prevention Strategies

Jane Pirkis<sup>1</sup>, David Gunnell<sup>2</sup>, Keith Hawton<sup>3</sup>, Sarah Hetrick<sup>4</sup>, Thomas Niederkrotenthaler<sup>5</sup>, Mark Sinyor<sup>6,7</sup>, Paul S. F. Yip<sup>8</sup>, and Jo Robinson<sup>9,10</sup>

<sup>1</sup>Melbourne School of Population and Global Health, University of Melbourne, VIC, Australia

<sup>2</sup>National Institute of Health and Care Research Biomedical Research Centre, University Hospitals Bristol and Weston NHS Foundation Trust, University of Bristol, UK

<sup>3</sup>Centre for Suicide Research, Department of Psychiatry, University of Oxford, UK

<sup>4</sup>Department of Psychological Medicine, University of Auckland, New Zealand

<sup>5</sup>Unit Suicide Research and Mental Health Promotion, Department of Social and Preventive Medicine, Center for Public Health, Medical University of Vienna, Austria

<sup>6</sup>Department of Psychiatry, Sunnybrook Health Sciences Centre, Toronto, ON, Canada

<sup>7</sup>Department of Psychiatry, University of Toronto, ON, Canada

<sup>8</sup>Hong Kong Jockey Club Centre for Suicide Research and Prevention, Department of Social Work and Social Administration, University of Hong Kong, Hong Kong SAR, PR China

<sup>9</sup>Orygen, Melbourne, VIC, Australia

<sup>10</sup>Centre for Youth Mental Health, University of Melbourne, VIC, Australia

Many countries have national suicide prevention strategies, all of which aim to reduce suicide and many of which also address self-harm more generally (World Health Organization, 2018). In this editorial, we argue that national strategies could be strengthened through an increased focus on the social determinants associated with suicide and self-harm. We present a public health model that articulates how these social determinants might operate and how they might interact with individual-level risk factors. We then describe how these social determinants might be addressed by a whole-of-government approach involving cross-sectoral action and genuine social participation and empowerment of people with lived experience of suicide and self-harm.

### Identifying the Social Determinants and Individual Risk Factors Associated With Suicide and Self-Harm

---

Figure 1 provides a framework for considering the myriad of social determinants or societal influences that impact on

suicide and self-harm, identifying targets for intervention that could be incorporated into national suicide prevention strategies. The model draws on the conceptual framework for action on the social determinants of health that was developed by the World Health Organization (WHO) Commission on Social Determinants of Health (CSDH; Solar & Irwin, 2010) and on other public health models that take a risk factor-based approach to suicide prevention (Moscicki, 1997; Silverman & Felner, 1995; Silverman & Maris, 1995). It describes a range of social determinants that may play a role in suicide and self-harm by interacting with various individual-level risk factors.

The first panel of the model highlights the kinds of social determinants that are known to have an impact on suicide and self-harm. Many of these are taken directly from the original CSDH framework (Solar & Irwin, 2010). The list is not meant to be exhaustive, but rather to illustrate the range of social determinants. They include *macro-economic policies* (i.e., policies that are concerned with the given society's overall economy, such as taxation policies), *public policies* (i.e., policies that relate to broad societal issues, such as healthcare), *social policies* (i.e., policies relating to addressing disadvantage, such as social welfare and

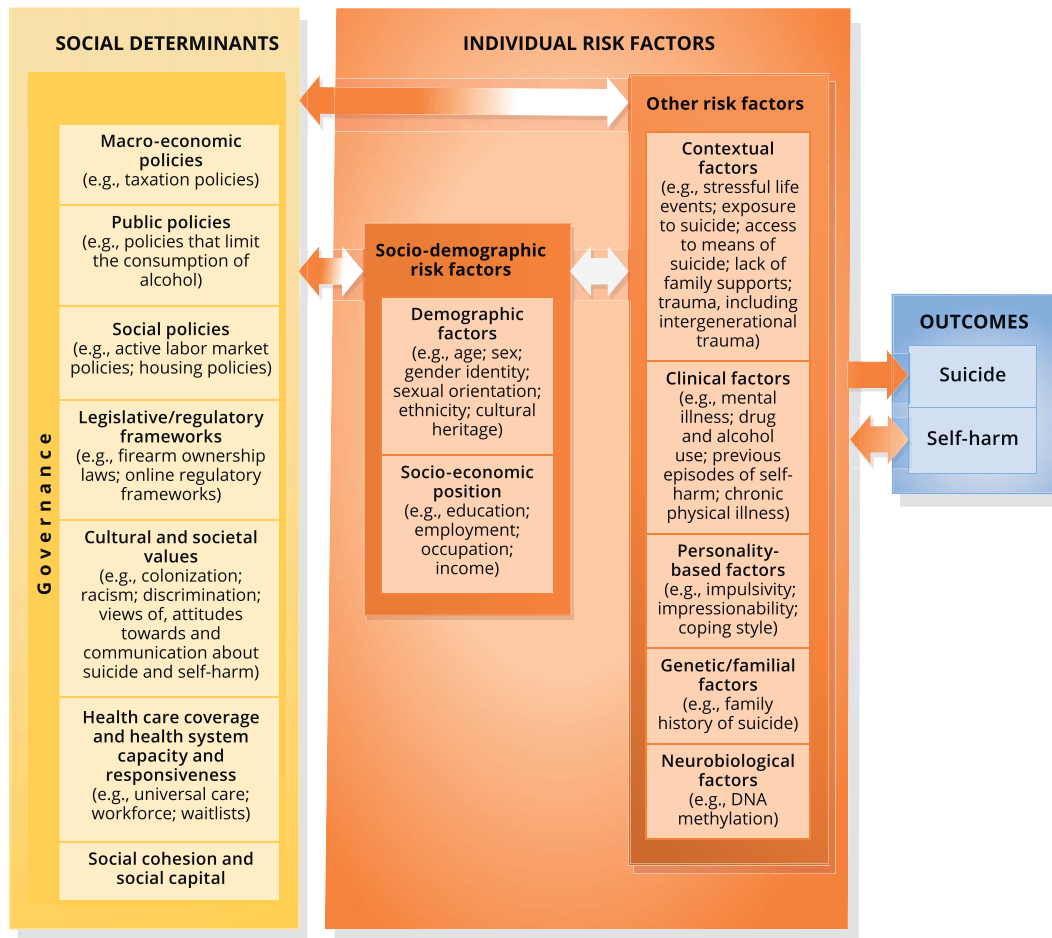


Figure 1. Social determinants of suicide and self-harm. Adapted from Solar and Irwin (2010).

housing), *legislative/regulatory frameworks* (i.e., laws and other regulatory mechanisms that govern the way individuals and organizations operate), *cultural and societal values* (i.e., societally reinforced beliefs and values that influence the way members of the society think and behave), and *healthcare coverage and health system capacity and responsiveness* (i.e., the ability of the health system to provide acute and ongoing care to members of society), and *social cohesion and social capital* (i.e., the extent to which members of society support each other and share a common purpose). All of these are underpinned by a society's *governance* (i.e., the structures, processes, and principles that shape societal decision-making).

The second panel describes the kinds of individual risk factors with which the aforementioned social determinants interact. These include sociodemographic, contextual, clinical, personality-based, genetic/familial, and neurobiological factors (Moscicki, 1997). The arrows between the social determinants and individual risk factors

are bidirectional because they represent the interaction between the two.

Together, the two panels illustrate the model's breadth. It incorporates the social determinants and individual-level risk factors that sit at the core of a clinical or medical approach, highlighting the importance of healthcare coverage and health system capacity, and the relevance of clinical factors such as mental illness. It extends beyond this to take into account social determinants and individual-level risk factors that relate to wider aspects of people's lives, some of which may have an impact from childhood or even intergenerationally.

In line with the original CSDH framework, which is concerned with social determinants of health and health inequities (Solar & Irwin, 2010), the current model gives some prominence to sociodemographic risk factors, particularly those that are directly related to socioeconomic position (e.g., education, employment, occupation, and income). It does this because there is strong evidence from

multiple studies that low socioeconomic position is associated with suicide and self-harm (Iemmi et al., 2016; Knipe et al., 2015). Social determinants are particularly powerful in terms of exacerbating or mitigating this risk. We know, for example, that economic recession is usually associated with elevated rates of suicide and self-harm, and that certain *macroeconomic policies* (e.g., taxation policies that widen inequalities) can intensify this, whereas particular *social policies* (e.g., active labor market policies and policies that guarantee a minimum wage) can offset it (Gertner et al., 2019; Stuckler et al., 2009). The interactions between social determinants and various other sociodemographic risk factors are also prominent in this model, with the relationship between *culture and societal values* and ethnicity and cultural heritage being a key example. This interaction is critical, with, for example, ill-treatment, discrimination, and prejudice influencing patterns of suicide in refugees and asylum seekers (Awaad et al., 2020).

The model also recognizes, however, that social determinants can bypass sociodemographic risk and interact with individual risk factors that are not necessarily related to inequities. In doing so, they can have a broader influence on suicide and self-harm across the population. One example is the way in which *legislative/regulatory frameworks* that govern firearm availability interact with contextual factors relating to access to means and personality-based factors such as impulsivity. Multiple studies have shown that use of firearms is a relatively common method of suicide in countries where gun control laws are lax and firearms are readily accessible. Conversely, where gun control legislation is stricter, firearm suicides occur far less frequently (Chen et al., 2016; Miller & Azrael, 2016).

As noted, the relationship between social determinants and individual risk factors can be bidirectional. For example, in the absence of comprehensive and effective *public and social policies*, people with no job, insecure housing, and problematic alcohol use may be placed at risk because they lose hope for their future, see no solution, and experience depression; conversely, people with severe mental illness may find it hard to hold down employment or settle in stable housing. If strong public and social policies are in place, however, both groups of individuals may benefit from job training opportunities or rent relief and find it easier to find support for their substance use or mental illness. This is not to diminish the impact of living with substance use or mental illness, nor to deny the fact that timely access to high-quality treatment is critical.

The *health system* may exert a major direct protective effect on suicide and self-harm for some people. Like the other social determinants in the model, it may interact with

the sociodemographic and other individual risk factors in the model, sometimes underpinning them and sometimes intensifying or attenuating them. Societies that offer universal healthcare coverage may be able to mitigate risk by addressing some of the individual-level clinical risk factors for suicide and self-harm (e.g., by offering accessible, high-quality care for those with mental illness; Bolton & Robinson, 2010; Too et al., 2019). However, universal healthcare coverage may not be enough if the health system is at capacity, and people are not appropriately referred, have long wait times to get into care, do not receive adequate care, or are unable to access care at all.

Some social determinants may benefit or disadvantage both those with sociodemographic risk factors and the population in general. *Public policies* that limit the consumption of alcohol are a case in point of how benefits can impact both those at risk and the entire population. Alcohol misuse is a key individual-level clinical risk factor for suicide, and although alcohol-related harms occur on a socioeconomic gradient, policies that limit alcohol consumption are likely to confer benefits across all socioeconomic strata (Rajput et al., 2019).

In the model, *social cohesion and social capital* are important social determinants that have a protective effect. The contribution of these constructs to suicide rates has been recognized for over 120 years, well before these specific terms were in use. Durkheim's text, *Le Suicide: Étude de Sociologie (Suicide: A Study in Sociology)*; Durkheim, 1897/1951) drew attention to the fact that markers of societal integration and connectedness in certain European countries (e.g., typical family structure, dominant religion, level of economic stability) were associated with lower suicide rates. More recent studies have shown that social capital, as measured by indicators of social participation, political participation, and trust, is inversely associated with suicide rates (Kelly et al., 2009).

The ultimate outcomes in the model are suicide and self-harm, as represented by the third panel. The interplay between the social determinants and individual-level risk factors in the preceding panels mean that a disproportionate burden of both suicide and self-harm falls on those who are more susceptible to negative effects of the various social determinants. A pernicious feedback loop – represented by the bidirectional arrow – operates here with the effect that some individuals who have self-harmed may find that they are more vulnerable to risk because they are more exposed to harmful social determinants (e.g., facing economic hardship because they are unable to return to the workforce, or bearing the brunt of negative cultural and societal values such as stigma and discrimination). They may also be at more direct increased risk by virtue of having already self-harmed (Geulayov et al., 2019). With suicide, because the outcome is fatal, the effect is unidirectional.

## A Whole-of-Government Approach to Preventing Suicide and Self-Harm

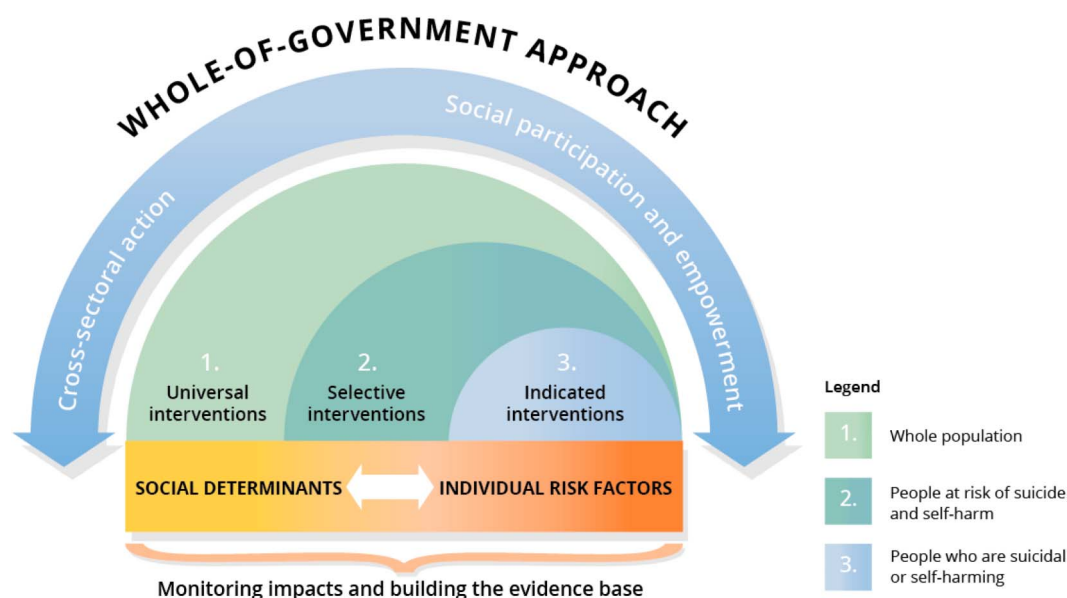
The public health model recognizes the salience of the kind of social determinants and individual-level risk factors identified above and addresses them through prevention activities classified as universal, selective, or indicated depending on how their target groups are defined. Universal interventions target the whole population, without necessarily identifying individuals who might be at risk of suicide or self-harm. Selective interventions target individuals who are not yet thinking about suicide or engaging in self-harm, but who exhibit risk factors that predispose them to do so in the future. Indicated interventions are designed for individuals who are already suicidal or self-harming and include a range of solutions typically (although not exclusively) offered in clinical settings. All three types of interventions are designed to minimize or ameliorate risk factors (or to bolster protective factors).

The ways in which social determinants influence suicide and self-harm will require us to intensify our focus on universal and selective interventions as we develop national suicide prevention strategies. We should not do this at the expense of indicated interventions for those who are already suicidal or self-harming, because these are critical, but we do need to broaden our thinking in relation to the full range of social determinants. Universal and selective interventions have the potential to benefit the whole population.

Figure 2 presents a hybrid, whole-of-government approach to preventing suicide and self-harm that overlays the CSDH framework on the traditional public health model. The model centers on context-specific strategies for tackling social determinants and their interactions with individual-level risk factors. These strategies take the form of universal, selective, and indicated interventions that involve *cross-sectoral action* that is undertaken not only by the health sector but importantly, also by sectors beyond health. The strategies are informed by and designed to promote *social participation and empowerment*. Like the CSDH framework, this model also emphasizes the importance of monitoring the impacts of policies and other interventions and strengthening the evidence for their effectiveness. This involves collecting data to determine what interventions are being delivered to whom and what outcomes are being achieved as a result. Further detail is provided in the next sections on the *cross-sectoral action* and *social participation and empowerment* that are integral to the whole-of-government approach.

### Cross-Sectoral Action

As indicated earlier, healthcare coverage and health system capacity and responsiveness are important social determinants of suicide and self-harm. They are vital for ensuring that suicidal people can access appropriate services and receive the support they need. However, cross-sectoral action (i.e., interventions that occur outside the health



**Figure 2.** Suicide and self-harm prevention model. Adapted from Silverman and Felner (1995) and Silverman and Maris (1995).

sector but affect health outcomes) must be a key component of any prevention strategy. This cross-sectoral action must involve genuine partnerships from all levels of multiple sectors.

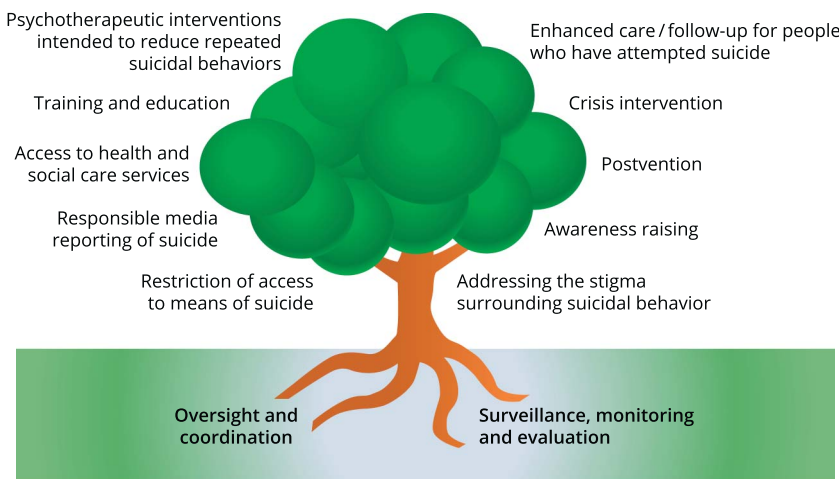
Traditionally, national suicide prevention strategies have not gone far enough in fostering cross-sectoral action. Many national suicide prevention strategies draw on the advice of the WHO and recommend a range of universal, selective, and indicated interventions, underpinned by strong, cohesive leadership and, wherever possible, evidence from a range of sources. Platt et al. (2019) summarized the typical interventions and described these and their underpinnings as the *components* of national strategies. These components are like the tree in Figure 3. The root system represents the underpinnings: oversight and coordination, which are crucial elements of strong leadership and appropriate investment; and surveillance, monitoring, and evaluation, which contribute to the evidence base. The branches represent the different interventions that are commonly delivered through national strategies.

Few would dispute the value of most of the components of national strategies, and some are helpful in addressing the key social determinants of suicide and self-harm. However, national suicide prevention strategies are limited because they are usually signed off by health ministers and the responsibility for their oversight rests with health bureaucrats. A search of relevant national strategies conducted in November 2020 identified 28 current strategies (Schlichthorst et al., 2022), 21 (75%) of which were published by health ministries (M. Schlichthorst, personal communication, December 1, 2020). Although these health-led strategies often make mention of the role of social determinants, they are light on genuine cross-sectoral collaboration, failing to attach appropriate import to the broader impact that policy decisions in other sectors can have on suicide and self-harm. They acknowledge the inequities created by these decisions

but do not address them in a meaningful way. For example, they do not recognize the major influence on suicide and self-harm of far-reaching policies relating to economic austerity measures. Nor do they recognize the impact of weak regulation of the alcohol and gambling industries, where market decisions are made for commercial gain. These policies can have a major impact on the risk of suicide and self-harm for some of the most vulnerable members of society. Worse, there is an implication that if governments recommend health sector-centric interventions prescribed by typical national suicide prevention strategies then they have “done their bit.”

This skewed emphasis flows from policy to practice. This is evident in the list of interventions that comprise the typical components of national strategies in Figure 3. The majority of these are delivered by clinically oriented health and related services and focus on individuals rather than populations (e.g., access to health and social care services, psychotherapeutic interventions designed to reduce repeated suicidal and self-harming behaviors, enhanced care/follow-up for people who have attempted suicide, crisis intervention). These are a critical part of any dedicated effort to reduce suicide and self-harm and, if done well, have the potential to make a real difference for suicidal individuals who make contact with the health system. By themselves, however, indicated interventions are not able to prevent people reaching the point of crisis; on-the-ground action from outside the health system is necessary here.

Even interventions that are not solely the responsibility of health services tend to be implemented through a healthcare lens. For example, training and education targeting gatekeepers or first responders is often developed and delivered by health professionals, as are programs designed to address the stigma and discrimination surrounding suicide. Health services and individual health professionals have a clear role to play in preventing suicide



**Figure 3.** Typical components of national suicide prevention strategies. Adapted from Platt et al. (2019).

https://econtent.hogrefe.com/doi/pdf/10.1027/0227-5910/a000902 - Jane Pirakis <j.pirakis@unimelb.edu.au> - Friday, March 24, 2023 4:08:46 PM - IP Address:180.150.36.20

and self-harm but achieving population-wide prevention requires a more holistic approach and a workforce with broad-ranging expertise. It is absolutely appropriate that when someone is in crisis or has self-harmed that clinicians in health services should provide care. However, frontline healthcare staff are often not optimally equipped to help with nonclinical issues (e.g., financial hardship, job losses, and relationship break-ups), and therefore clear referral pathways are required to ensure that clinical and nonclinical issues can be addressed at the same time.

There may also be benefits in complementing some of the more clinical interventions with other approaches. There is evidence, for example, that peer workers with lived experience of suicide and self-harm may be well-placed to support those in a suicidal crisis in supportive and/or open environments (Oostermeijer et al., 2022).

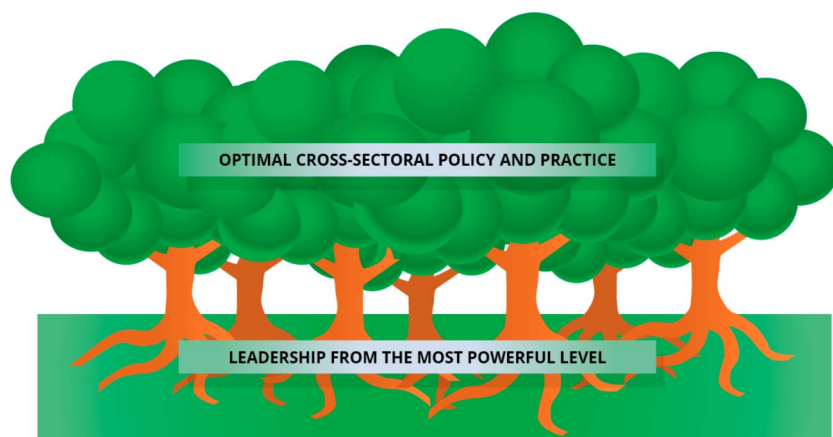
National suicide prevention strategies need to involve a whole-of-government partnership that recognizes how policies in a range of sectors can increase or decrease people's risk of suicide and self-harm. This would lead to better, more robust and concerted prevention efforts and signal a greater prioritization of suicide and self-harm as major targets of societal intervention. As one example, the communications portfolio and online safety regulator might look closely at how their policies and regulations could be modified to improve online safety. This could include approaches that maximize the chances of online conversations about suicide being helpful and unlikely to have adverse impacts. It could also include working with the social media industry to address the ways in which their algorithms operate, in order to maximize the helpful content and minimize the harmful content that people – particularly young people – are exposed to.

There are precedents for this. The “Health in All Policies” approach holds politicians and policy-makers from all sectors accountable for considering the consequences of their decisions on health and wellbeing, with a view to

improving population health and reducing health inequities (WHO, 2014). Ideally, national suicide prevention strategies should promote a “Suicide and Self-harm Prevention in All Policies” approach that is led by chief ministers, or by specially appointed ministers with a cross-sectoral remit. This strong leadership is critical and relates to the notion of governance underpinning the kinds of social determinants of suicide and self-harm that are outlined in Figure 1.

The actions that flow from more cross-sectoral suicide prevention strategies need to reflect the urgency of dealing with the social determinants of suicide and self-harm. They should draw on the best available evidence wherever possible, but should not be stalled while we wait for the evidence to accrue. Judicious decisions should be made about investing in innovative solutions that are likely to have a significant impact. Of course, these promising actions should be carefully evaluated to determine whether they do in fact achieve their goals.

In order to significantly reduce rates of suicide and self-harm, we need to move beyond the single health sector tree in Figure 3. We need a forest of trees, like those in Figure 4, that form a multisector ecosystem that recognizes that preventing suicide and self-harm is “everybody's business.” Each tree represents a different sector; health is a key sector but not the only one. The trees are underpinned by a root ball that represents the most powerful leadership, and their branches are intertwined in a way that promotes optimal cross-sectoral policy and practice. Some trees are grafted from others, representing ideal cross-sectoral collaboration. Within sectors, the trees' trunks bring the branches together to ensure that they are not competing for resources. The biodiversity of the forest floor is critical too, representing the many stakeholders who are involved at a grass-roots level and drive bottom-up initiatives that are key to innovation in suicide and self-harm prevention. These stakeholders include but are by no means limited to businesses and



**Figure 4.** A new approach to national suicide prevention strategies.

community and social organizations. With nutrients and sunlight representing sustainable funding support, the trees form a canopy that provides optimal protection against suicide and self-harm.

## Social Participation and Empowerment

Social participation is critical for suicide and self-harm prevention. Social participation is based on the notion that all groups in society are empowered to have a significant influence on policy decisions that affect their wellbeing and quality of life. In this case, people with lived experience of suicide should be empowered to influence decisions that affect their risk of suicide and self-harm. Family members, friends, and others who care about these people should also have a major say in these decisions, as should those who have lost someone to suicide.

A response to suicide and self-harm that fosters social participation and empowerment is vital for two reasons. The first of these is based on a simple human rights argument. Everyone has the right to participate in shaping public and social policies that affect their wellbeing or, in this case, influence their risk of suicide and self-harm. The second reason is that policies that influence suicide and self-harm are likely to be more effective and more sustainable if relevant groups of stakeholders have genuine ownership of them. Solutions are more likely to come from those who are affected by the social determinants of suicide and self-harm, living with them as part of their reality every day.

We have a long way to go in terms of participation and empowerment in suicide and self-harm prevention, although some progress has been made. Increasingly, people with lived experience of suicide and self-harm are being offered a seat at the decision-making table, although not all groups are well-represented (e.g., young people often miss out). Despite this generally positive direction, the decisions that people with lived experience are invited to have input into tend to be quite specific, often relating to the way in which elements of the mental health system might be better reconfigured to support them, or to how specific suicide prevention programs might be designed and delivered. Even when they are involved in higher-level policy committees, these committees tend to have the health-centric policy focus described above.

We need to ensure that people who are at heightened risk of suicide and self-harm have a genuine, meaningful influence over policy decisions in the “big-ticket” non-health areas that perpetuate their disproportionate level of risk. Their experiences need to be fully incorporated into agenda-setting across the full gamut of relevant policies. They should be involved in the highest-level committees, sit on working groups that draft these policies, and be

employed in relevant government departments. They should be recognized as experts; many people with lived experience of suicide and self-harm are also professionals, and viewing their input as separate to or different from that of other stakeholders creates a false dichotomy.

## Conclusion

We have provided a framework for national suicide prevention strategies that is based on addressing the social determinants of suicide and self-harm by emphasizing interventions that use policy, legislative/regulatory, and systems levers from beyond the health sector. The suggested approach is not designed to replace existing international efforts, but rather to build on them through broader-ranging, longer-term, more visionary solutions that have people with lived experience at their core. There are already many great efforts happening in communities around the world, and national strategies should build on and leverage from these.

## References

- Awaad, R., Dailami, M., & Nouredine, N. (2020). US policy of public charge inadmissibility and refugee suicides. *Lancet Psychiatry*, 7(3), Article e12. [https://doi.org/10.1016/s2215-0366\(20\)30037-7](https://doi.org/10.1016/s2215-0366(20)30037-7)
- Bolton, J., & Robinson, J. (2010). Population-attributable fractions of Axis I and Axis II mental disorders for suicide attempts: Findings from a representative sample of the adult, noninstitutionalized US population. *American Journal of Public Health*, 100(12), 2473–2480. <https://doi.org/10.2105/ajph.2010.192252>
- Chen, Y.-Y., Wu, K. C.-C., Wang, Y., & Yip, P. S. F. (2016). Suicide prevention through restricting access to suicide means and hotspots. In R. O'Connor, & J. Pirkis (Eds.), *International handbook of suicide prevention*. Wiley Blackwell.
- Durkheim, E.. (1951). *Suicide: A study in sociology* (J. A. Spaulding, & G. Simpson, Trans.). Routledge (Original work published 1897).
- Gertner, A., Rotter, J., & Shafer, P. (2019). Association between state minimum wages and suicide rates in the US. *American Journal of Preventive Medicine*, 56(5), 648–654. <https://doi.org/10.1016/j.amepre.2018.12.008>
- Geulayov, G., Casey, D., Bale, L., Brand, F., Clements, C., Farooq, B., Kapur, N., Ness, J., Waters, K., Tsiachristas, A., & Hawton, K. (2019). Suicide following presentation to hospital for non-fatal self-harm in the Multicentre Study of Self-harm: A long-term follow-up study. *Lancet Psychiatry*, 6(12), 1021–1030. [https://doi.org/10.1016/s2215-0366\(19\)30402-x](https://doi.org/10.1016/s2215-0366(19)30402-x)
- Iemmi, V., Bantjes, J., Coast, E., Channer, K., Leone, T., McDaid, D., Palfreyman, A., Stephens, B., & Lund, C. (2016). Suicide and poverty in low-income and middle-income countries: A systematic review. *Lancet Psychiatry*, 3(8), 774–783. [https://doi.org/10.1016/s2215-0366\(16\)30066-9](https://doi.org/10.1016/s2215-0366(16)30066-9)
- Kelly, B., Davoren, M., Mhaolain, A., Breen, E., & Casey, P. (2009). Social capital and suicide in 11 European countries: An ecological analysis. *Social Psychiatry and Psychiatric Epidemiology*, 44(11), 971–977. <https://doi.org/10.1007/s00127-009-0018-4>

- Knipe, D., Carroll, R., Thomas, K., Pease, A., Gunnell, D., & Metcalfe, C. (2015). Association of socio-economic position and suicide/attempted suicide in low and middle income countries in South and South-East Asia: A systematic review. *BMC Public Health*, 15, Article 1055. <https://doi.org/10.1186/s12889-015-2301-5>
- Miller, M., & Azrael, D. (2016). Reducing suicide without affecting underlying mental health. In R. O'Connor, & J. Pirkis (Eds.), *International handbook of suicide prevention* (pp. 637–662). Wiley Blackwell.
- Moscicki, E. (1997). Identification of suicide risk factors using epidemiologic studies. *Psychiatric Clinics of North America*, 20(3), 499–517. [https://doi.org/10.1016/s0193-953x\(05\)70327-0](https://doi.org/10.1016/s0193-953x(05)70327-0)
- Oostermeijer, S., Morgan, A., Cheesmond, N., Green, R., & Reavley, N. (2022). *The effects of Australia's first residential peer-support Suicide Prevention and Recovery Centre (SPARC): A pilot study* [Manuscript submitted for publication].
- Platt, S., Arensman, E., & Rezaeian, M. (2019). National suicide prevention strategies: Progress and challenges. *Crisis*, 40(2), 75–82. <https://doi.org/10.1027/0227-5910/a000587>
- Rajput, S., Aziz, M., & Siddiqui, M. (2019). Social determinants of health and alcohol consumption in the UK. *Epidemiology Biostatistics and Public Health*, 16(3), Article e13128. <https://doi.org/10.2427/13128>
- Schlichthorst, M., Reifels, L., Spittal, M., Clapperton, A., Scurrah, K., Kolves, K., Platt, S., Pirkis, J., & Kryszynska, K. (2022). Evaluating the effectiveness of components of national suicide prevention strategies: An interrupted time series analysis. *Crisis*. Advance online publication. <https://doi.org/10.1027/0227-5910/a000887>
- Silverman, M., & Felner, R. (1995). Suicide prevention programs: Issues of design, implementation, feasibility, and developmental appropriateness. *Suicide and Life-Threatening Behavior*, 25(1), 92–104.
- Silverman, M., & Maris, R. (1995). The prevention of suicidal behaviors: An overview. *Suicide and Life-Threatening Behavior*, 25(1), 10–21.
- Solar, O., & Irwin, A. (2010). *A conceptual framework for action on the social determinants of health: Social determinants of health discussion paper 2 (policy and practice)*. World Health Organization.
- Stuckler, D., Basu, S., Suhrcke, M., Coutts, A., & McKee, M. (2009). The public health effect of economic crises and alternative policy responses in Europe: An empirical analysis. *Lancet*, 374(9686), 315–323. [https://doi.org/10.1016/s0140-6736\(09\)61124-7](https://doi.org/10.1016/s0140-6736(09)61124-7)
- Too, L. S., Spittal, M., Bugeja, L., Reifels, L., Butterworth, P., & Pirkis, J. (2019). The association between mental disorders and suicide: A systematic review and meta-analysis of record linkage studies. *Journal of Affective Disorders*, 259, 302–313. <https://doi.org/10.1016/j.jad.2019.08.054>
- World Health Organization. (2014). *Health in all policies*. <https://www.who.int/publications/i/item/9789241506908>
- World Health Organization. (2018). *National suicide prevention strategies: Progress, examples and indicators*. <https://apps.who.int/iris/handle/10665/279765>

Published online March 24, 2023

### Acknowledgments

We would like to thank our Lived Experience Advisory Group for helping us shape this editorial. As individuals and as a group they generously shared perspectives and offered insights that made the document stronger, sharper, and much more relevant than it would otherwise have been. Members of the group were: Glenn Cotter, Alan Earls, Maddox Gifford, Kerry Gleeson, David Kelly, Karyn Moyle, Grace Sholl, Atria Rezwan, Lucia Volker Smith, and Natalie Willis.

### Funding

This work was funded by the Australian National Suicide Prevention Office (NSPO), which contributed to model development and to the preparation of this editorial.

### ORCID

- Jane Pirkis  
 <https://orcid.org/0000-0002-2538-4472>
- David Gunnell  
 <https://orcid.org/0000-0002-0829-6470>
- Keith Hawton  
 <https://orcid.org/0000-0003-4985-5715>
- Thomas Niederkrotenthaler  
 <https://orcid.org/0000-0001-9550-628X>
- Mark Sinyor  
 <https://orcid.org/0000-0002-7756-2584>

Jane Pirkis, PhD, is Director of the Centre for Mental Health at the University of Melbourne. She is also the Editor-in-Chief of *Crisis* and a past vice president of the International Association for Suicide Prevention (IASP). She is well-known for her work on suicide prevention policy and has received various awards, including IASP's 2019 Erwin Stengel Research Award.

David Gunnell, MB, ChB, DSc, is Emeritus Professor of Epidemiology at the University of Bristol, UK. He is a public health physician and epidemiologist with a longstanding research interest in the etiology and prevention of suicide and in improving population mental health.

Keith Hawton is Professor of Psychiatry and Director of the Centre for Suicide Research, University of Oxford as well as a consultant psychiatrist at the Oxford Health NHS Foundation Trust, UK. His research group is involved in investigating the causes, treatment, prevention, and outcome of suicidal behavior. This has included a long-standing interest in public health approaches to prevention.

Sarah Hetrick is Associate Professor of Youth Mental Health, University of Auckland, and Principal Clinical Advisor in the Suicide Prevention Office, Ministry of Health, New Zealand. She is a coordinating editor for the Cochrane Common Mental Disorders Group and a clinical psychologist.

Thomas Niederkrotenthaler is Associate Professor and Head of the research unit Suicide Research and Mental Health Promotion, Center for Public Health, Medical University of Vienna, Austria. He is an internationally recognized expert in the area of suicide and the media.

Mark Sinyor is a psychiatrist at Sunnybrook Health Sciences Centre, an associate professor at the University of Toronto, and the America's lead for the International Association for Suicide Prevention's Partnerships for Life initiative. He was lead author of the 2018 Canadian Psychiatric Association recommendations for media reporting on suicide.

Paul S. F. Yip is Director of the Hong Kong Jockey Club Centre for Suicide Research and Prevention at the University of Hong Kong, PR China. He is a recipient of the International Association for Suicide Prevention's Erwin Stengel Research Award (2011). His interests lie in adopting a public health approach for suicide prevention.

Jo Robinson is a professor at Orygen in Melbourne, Australia, where she leads the suicide prevention research unit. Her work focuses on developing and testing novel interventions that specifically target at risk youth across settings and on the translation of research evidence into practice and policy. She is also Vice President of the International Association for Suicide Prevention (IASP).